








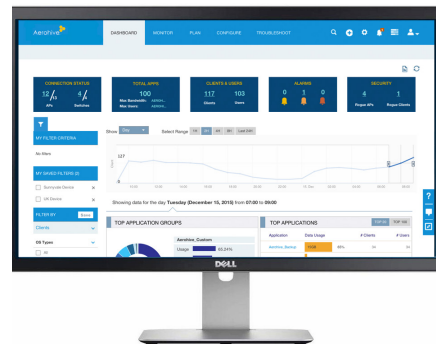
Aerohive wireless access points feature built-in distributed control technology that provides enterprise scalability without the need for controllers, advanced BYOD and security features, and cloud-based management via HiveManager, a network management system that is available for public or private cloud deployment.

Models	Aerohive wireless access points						
							
Specifications	802.11ac 2x2:2 MIMO 867Mbps max rate	802.11ac 2x2:2 MIMO 867 Mbps max rate	802.11ac 3x3:3 MIMO 1.3Gbps max rate	802.11ac Wave 2 3x3:3 MU-MIMO Software selectable radios 2.6Gbps max rate	802.11ac Wave 2 3x3:3 MU-MIMO 1.3Gbps max rate	802.11ac Wave 2 4x4:4 MU-MIMO Software selectable radios 3.64Gbps max rate	802.11ac 2x2:2 MIMO 867Mbps max rate
Security	Trusted Platform Module (TPM) Chip for hardware-based key storage and encryption						
Network interface(s)	1x GbE	1x GbE	2x GbE w/link aggregation	2x GbE w/link aggregation	2x GbE w/link aggregation	2x GbE w/link aggregation	1x GbE
PoE interface	802.3af	802.3af	802.3af and/or 802.3at	802.3af and/or 802.3at	802.3af and/or 802.3at	802.3af and/or 802.3at	802.3at
Other interface	USB and BLE	N/A	USB	Integrated BLE and USB	Integrated BLE and USB	Integrated BLE and USB	N/A
Operating temp	0° to 40° C	0° to 40° C	0° to 40° C	0° to 40° C	0° to 50° C	0° to 40° C	-40° to 55° C
Environment	Indoor	Indoor, plenum rated	Indoor, plenum rated	Indoor, plenum rated	Indoor, plenum rated	Indoor, plenum rated	Outdoor, waterproof (IP 67)

HiveManager Cloud-Based Network Management

HiveManager is a powerful cloud-based network management solution for Dell EMC Networking switches and Aerohive access points. This next-generation management system allows administrators to plan, configure and deploy their network within minutes and maintain control through an informative, user focused GUI. Key benefits include:

- Public or private cloud deployment options
- Flexible, cloud-based management
- Simplified deployment workflows
- Streamlined device and network configuration
- Centralized policy management
- Help desk-style troubleshooting interface



Dell EMC Support

HiveManager includes 1, 3 or 5 years of ProSupport for Multivendor Software, providing access to Dell EMC's global team of certified engineers who serve as primary support provider for troubleshooting your environment. We deliver a consistent level of software support services for server, storage and networking hardware to minimize disruptions, while helping you maintain a high level of availability and operational excellence.

[Learn more and register for a free trial of HiveManager at Dell.com/HiveManager](http://Dell.com/HiveManager)

© 2017 Dell Inc. All rights reserved. Dell, the DELL logo and the DELL badge are trademarks of Dell Inc. Other trademarks and trade names may be used in this document to refer to either the entities claiming the marks and names or their products. Dell disclaims proprietary interest in the marks and names of others. This document is for informational purposes only. Dell reserves the right to make changes without further notice to the products herein. The content provided is as-is and without expressed or implied warranties of any kind.